



HAPPIESTCAMPER.COM

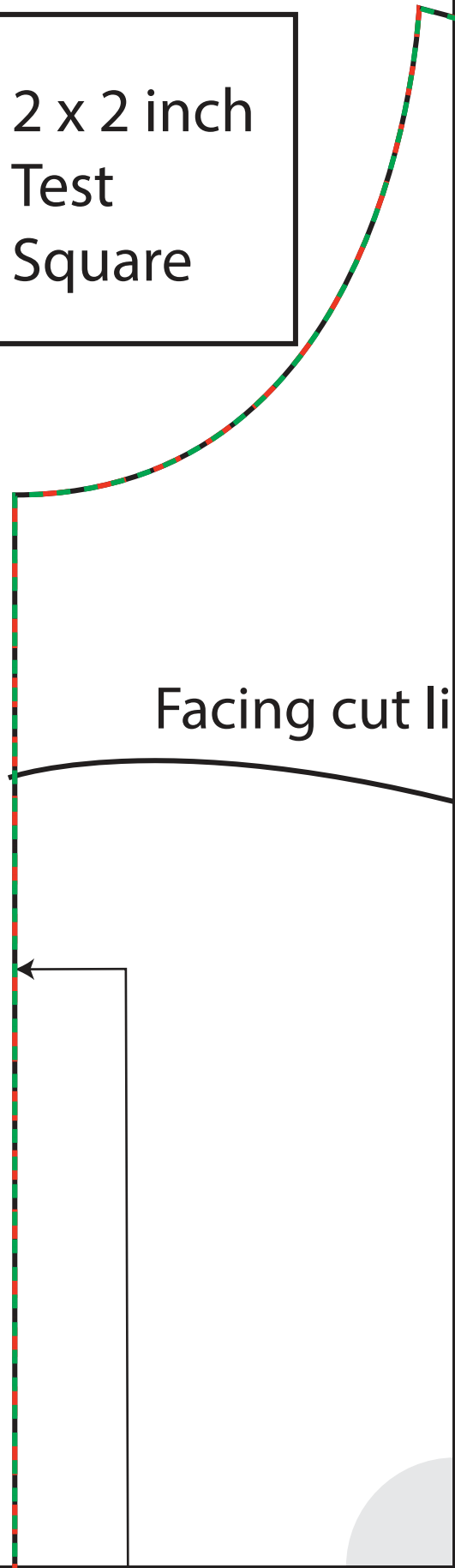
Size Key Chart

Small

Medium

Large

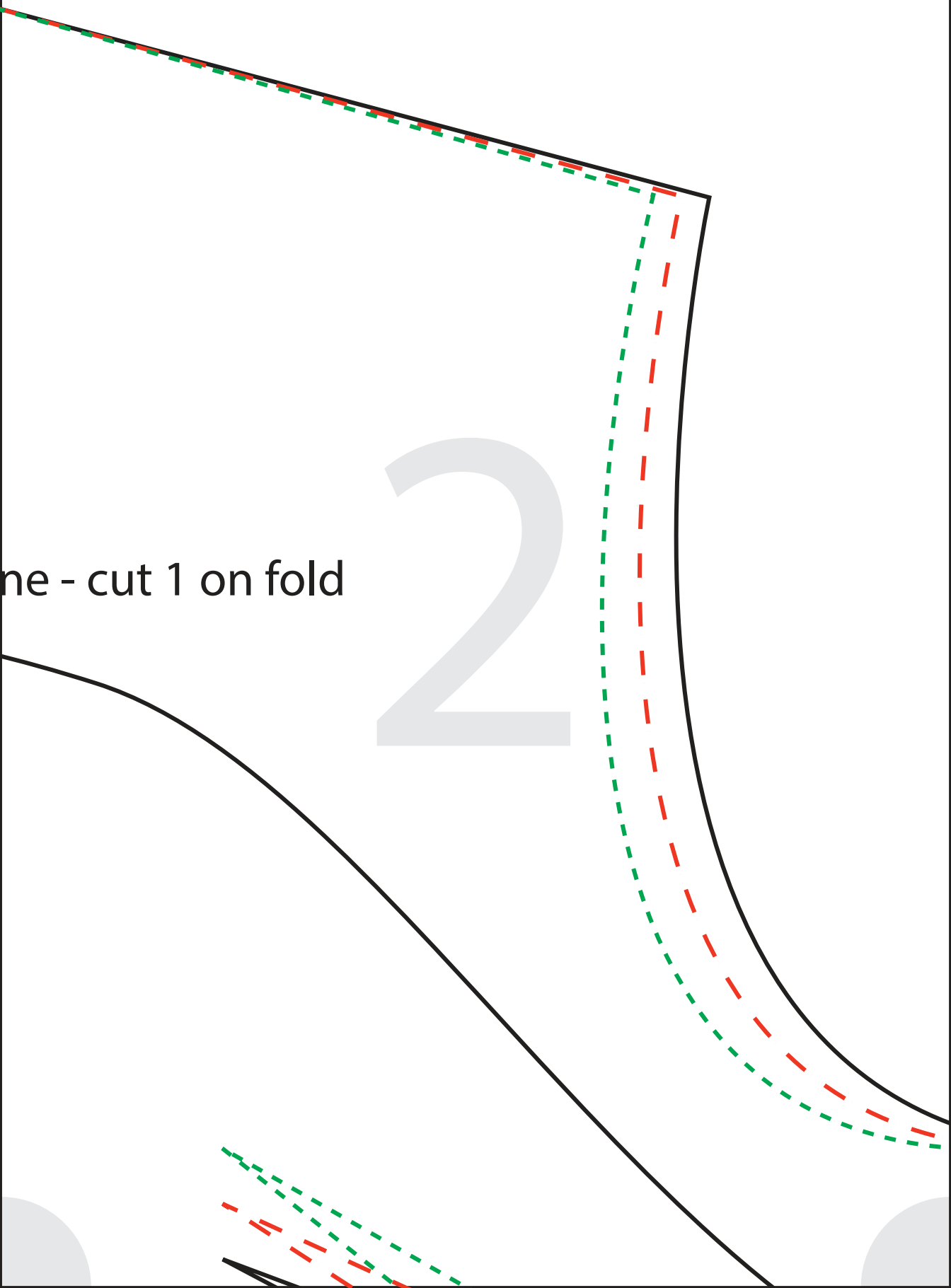
2 x 2 inch
Test
Square



Facing cut li

ne - cut 1 on fold

2

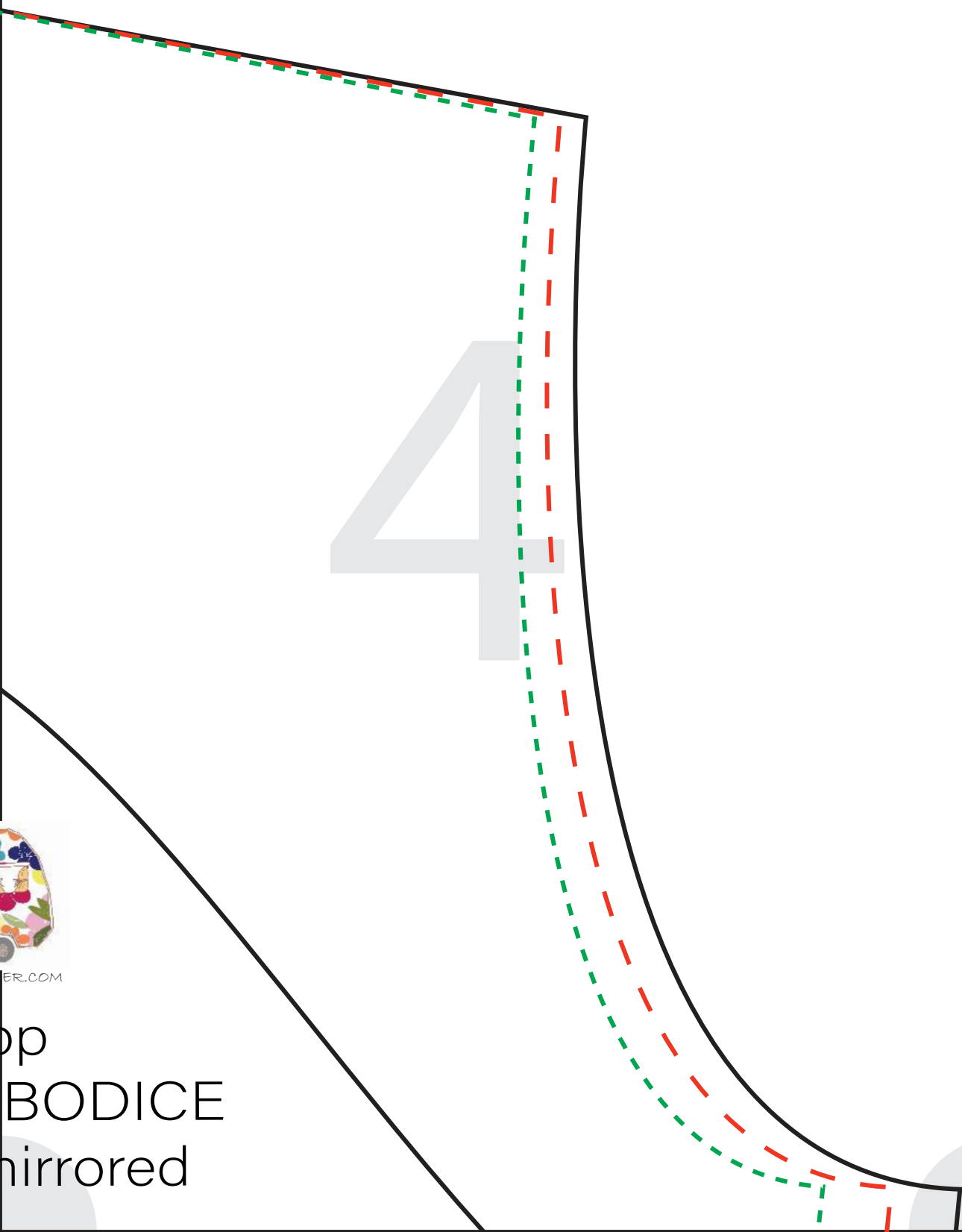


3
Facing cut line - cut 2 mirrored



HAPPIESTCAMPER

Crop To
BACK
Cut 2 m

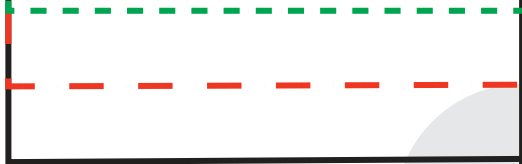


ER.COM

op
BODICE
mirrored

FOLD

5





HAPPIESTCAMPER.COM

Crop Top FRONT BODICE Cut 1 on Fold

3/8" seam allowance already included

7

zipper

The crop top is a snug fit . If you feel that you need more room to get into the top, sew your zipper with the pull pointing towards the hem with 3" from the neckline . The process is the same to enter the zipper both ways.

8

