



HAPPIESTCAMPER.COM

## Size Key Chart

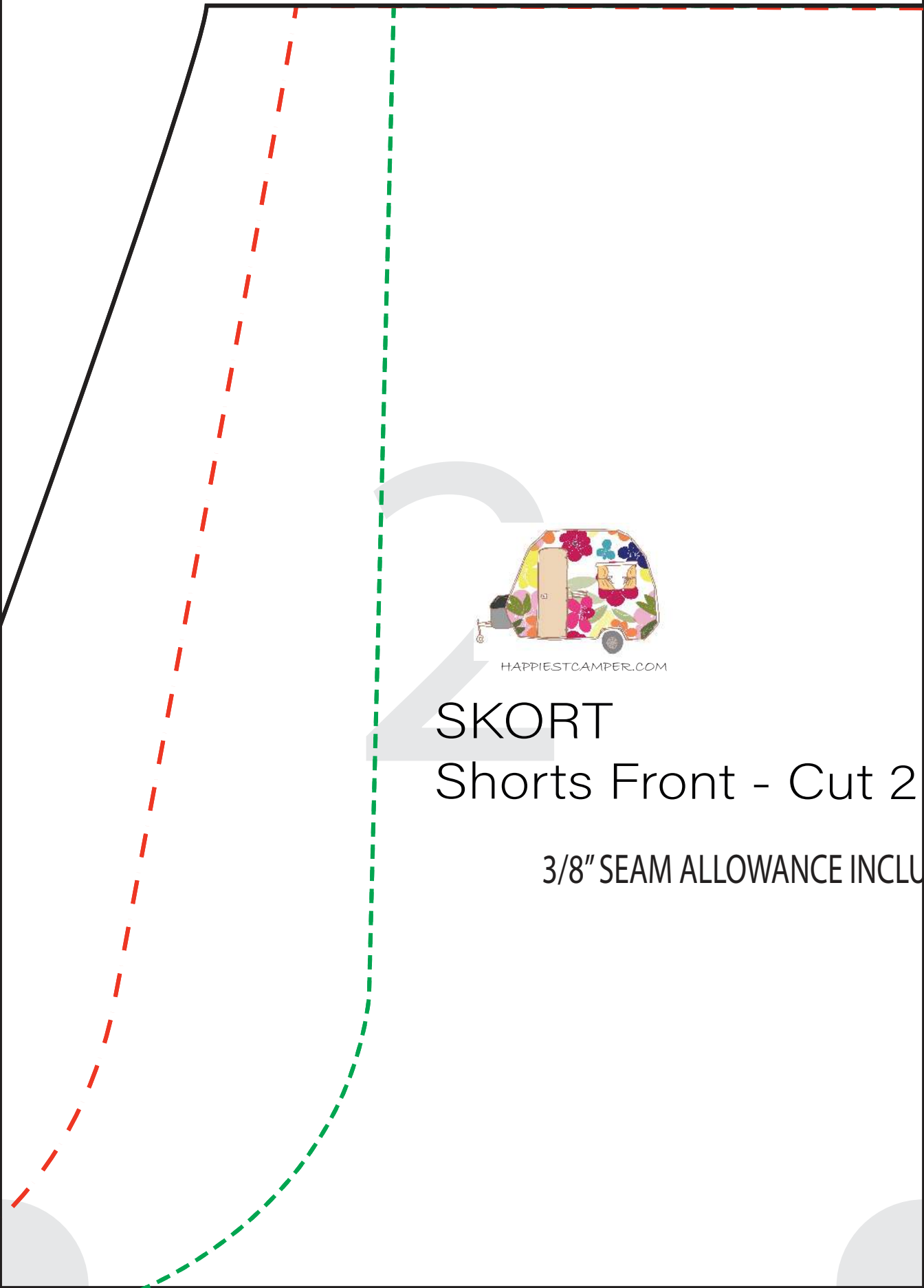
Small -----

Medium -----

Large -----



2 x 2 inch  
Test  
Square



HAPPIESTCAMPER.COM

# SKORT

## Shorts Front - Cut 2

3/8" SEAM ALLOWANCE INCLU

3

Mirrored

DED





HAPPIESTCAMPER.COM

# SKORT

## Shorts Back Waist

4



HAPPIESTCAMPER.COM

# SKORT

## Shorts Front -Facing - Cut

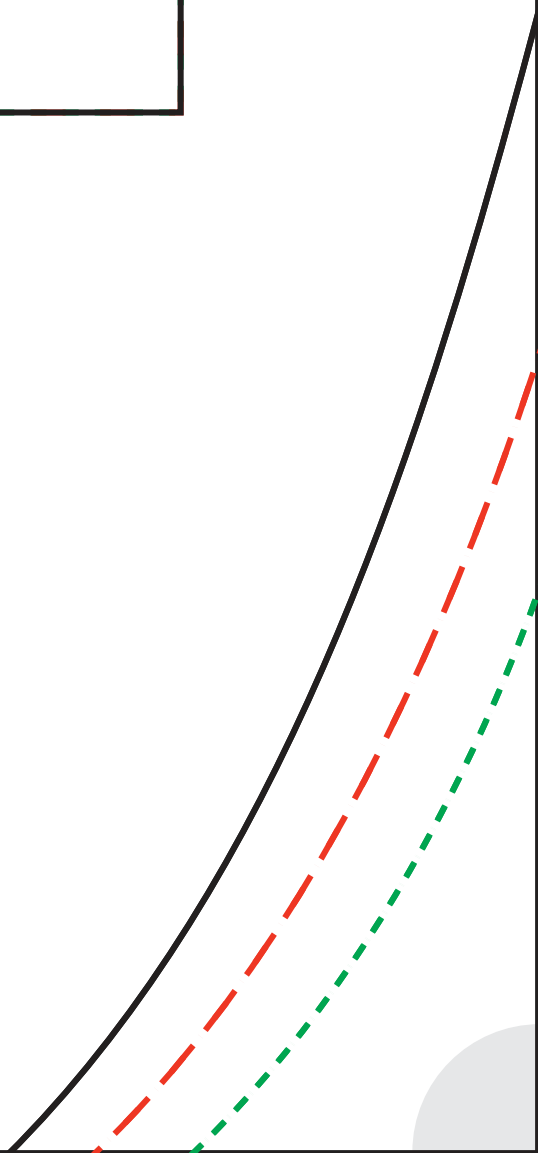
3/8" SEAM ALLOWANCE INCLUDED

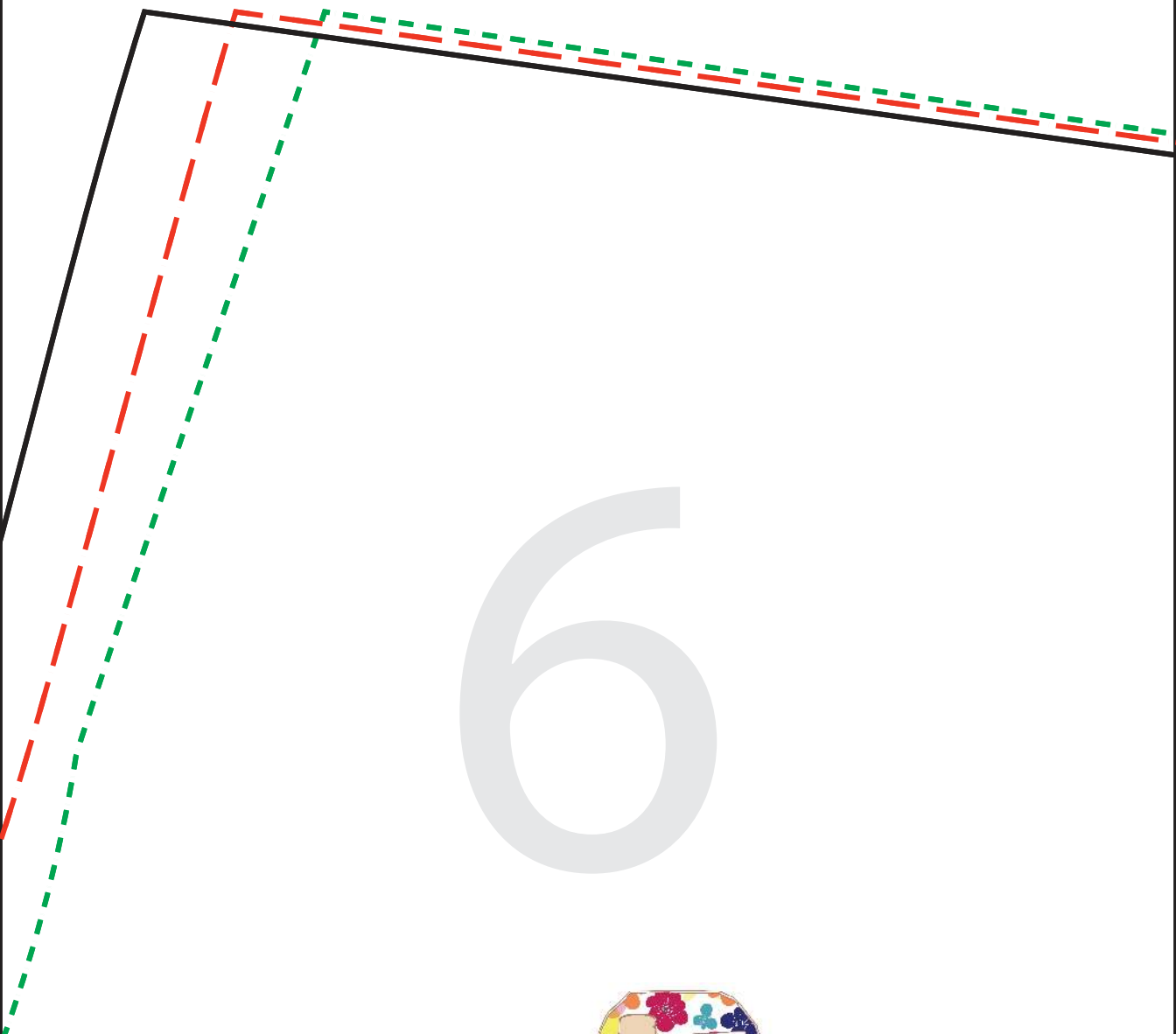
stband - Cut 1 on Fold

**FOLD**

**FOLD**

1 on Fold





6

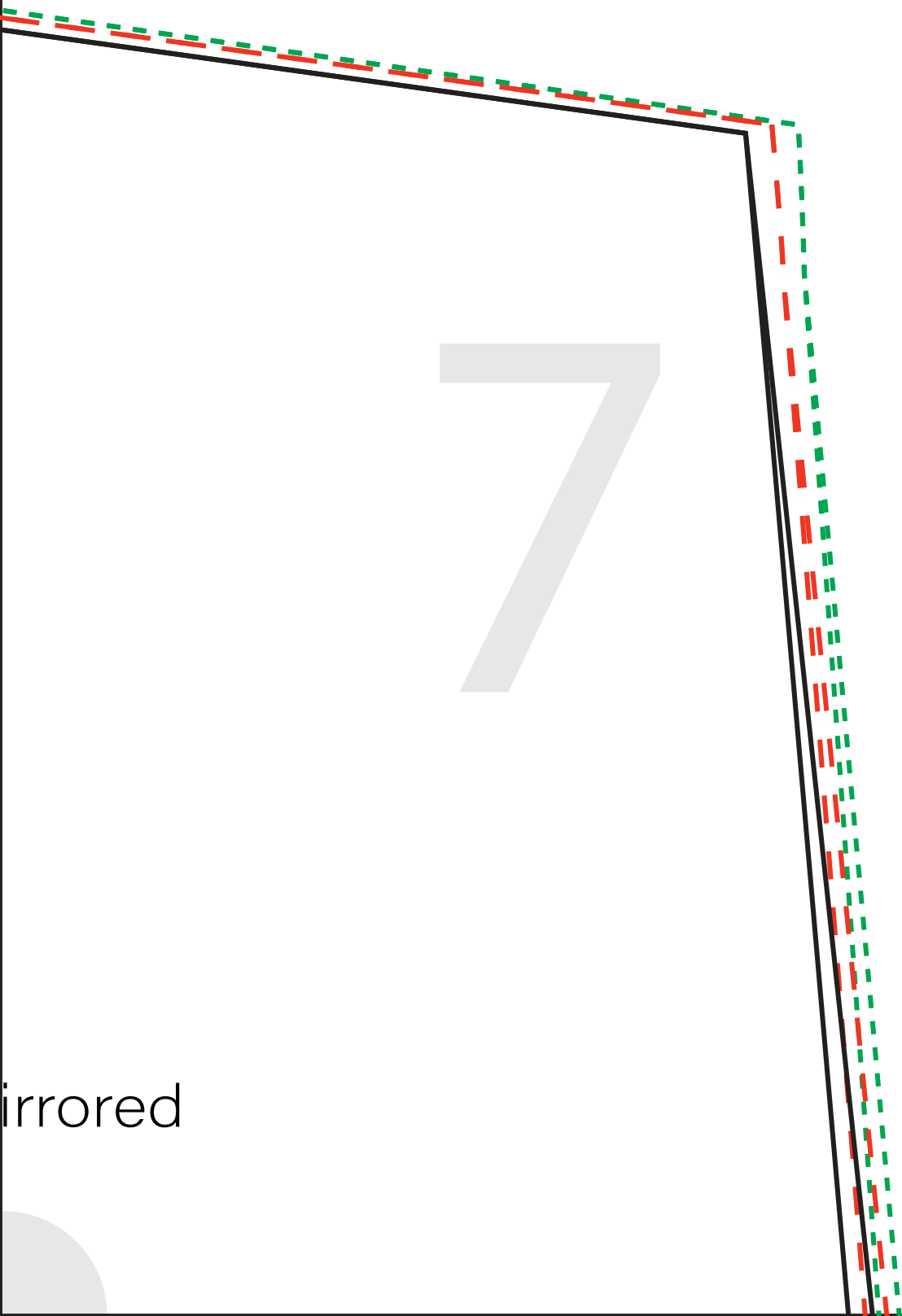


HAPPIESTCAMPER.COM

SKORT

Shorts Back - Cut 2 M

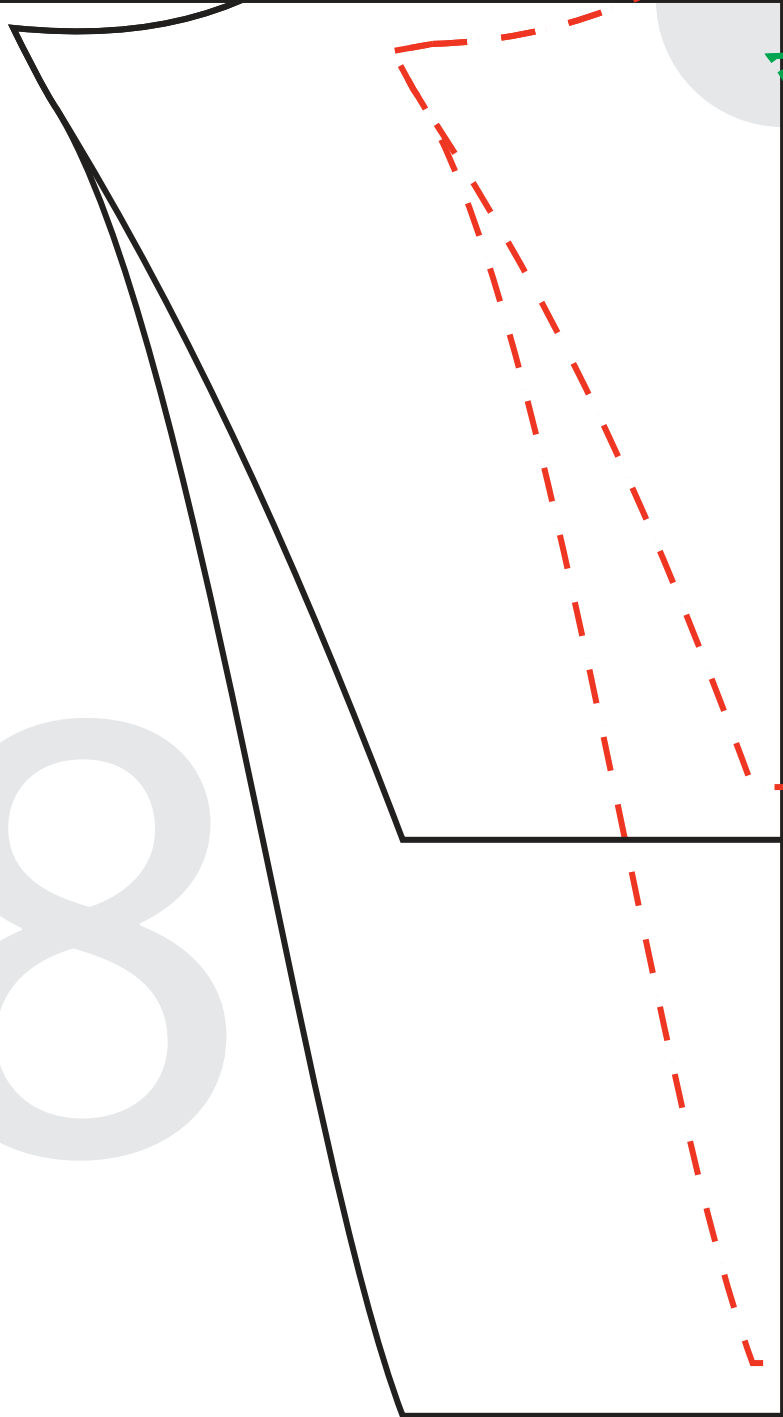
3/8" SEAM ALLOWANCE INCLUDED



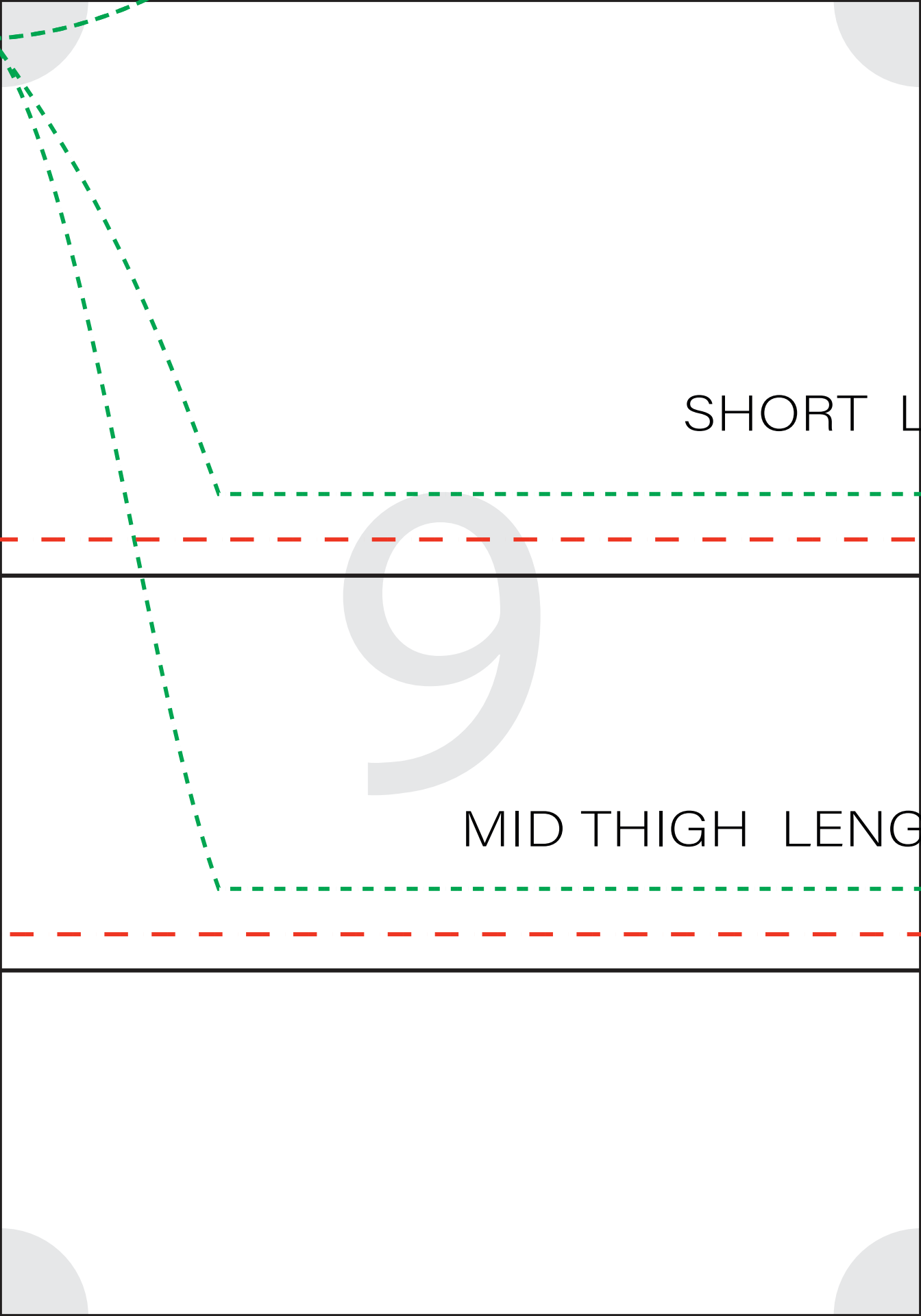
irrored



8







SHORT LENGTH

MID THIGH LENGTH

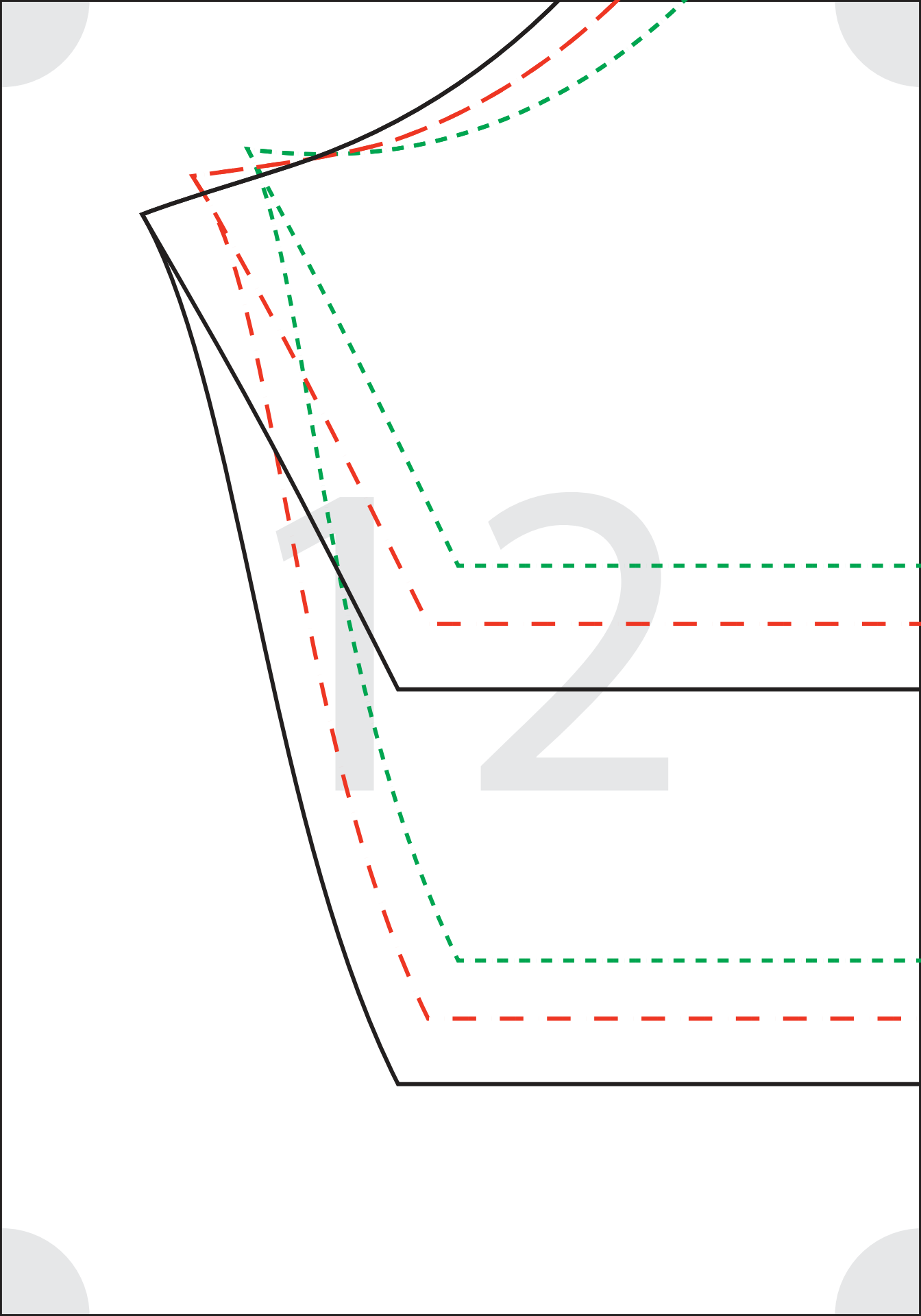
LENGTH



TH



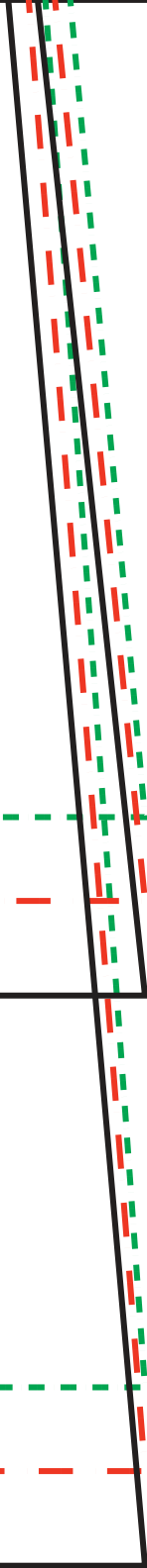
11



SHORT LENGTH

MID THIGH LENGTH

14



15



HAPPIESTCAMPER.COM

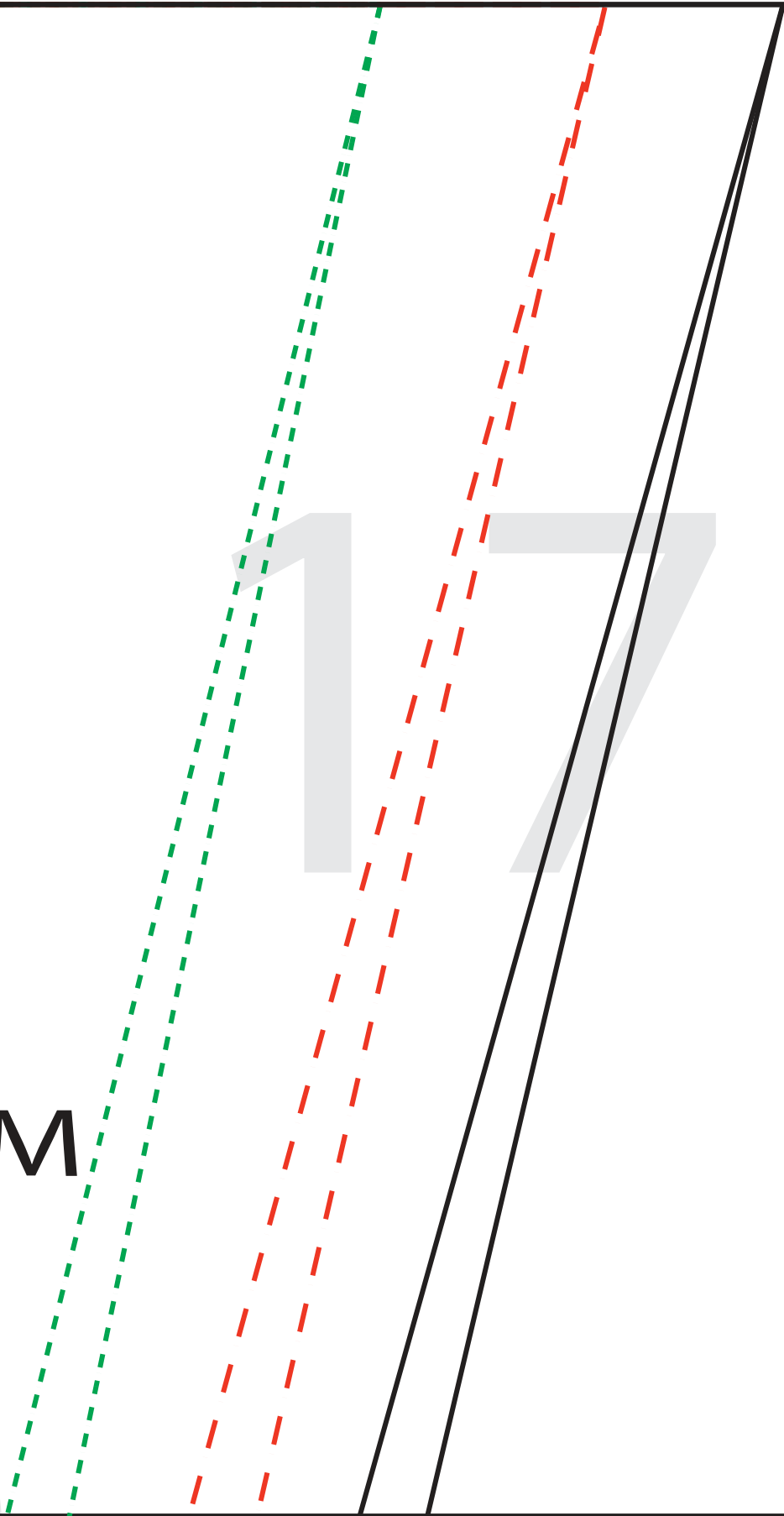
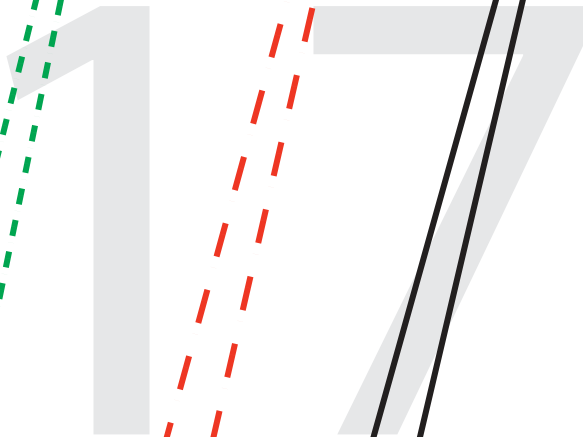
# SKORT

Skirt - Cut 1 Main, 1 lining

3/8" SEAM ALLOWANCE INCLUDED



MEM



18

MID T

# HEM

L

19

SHORT LENGTH

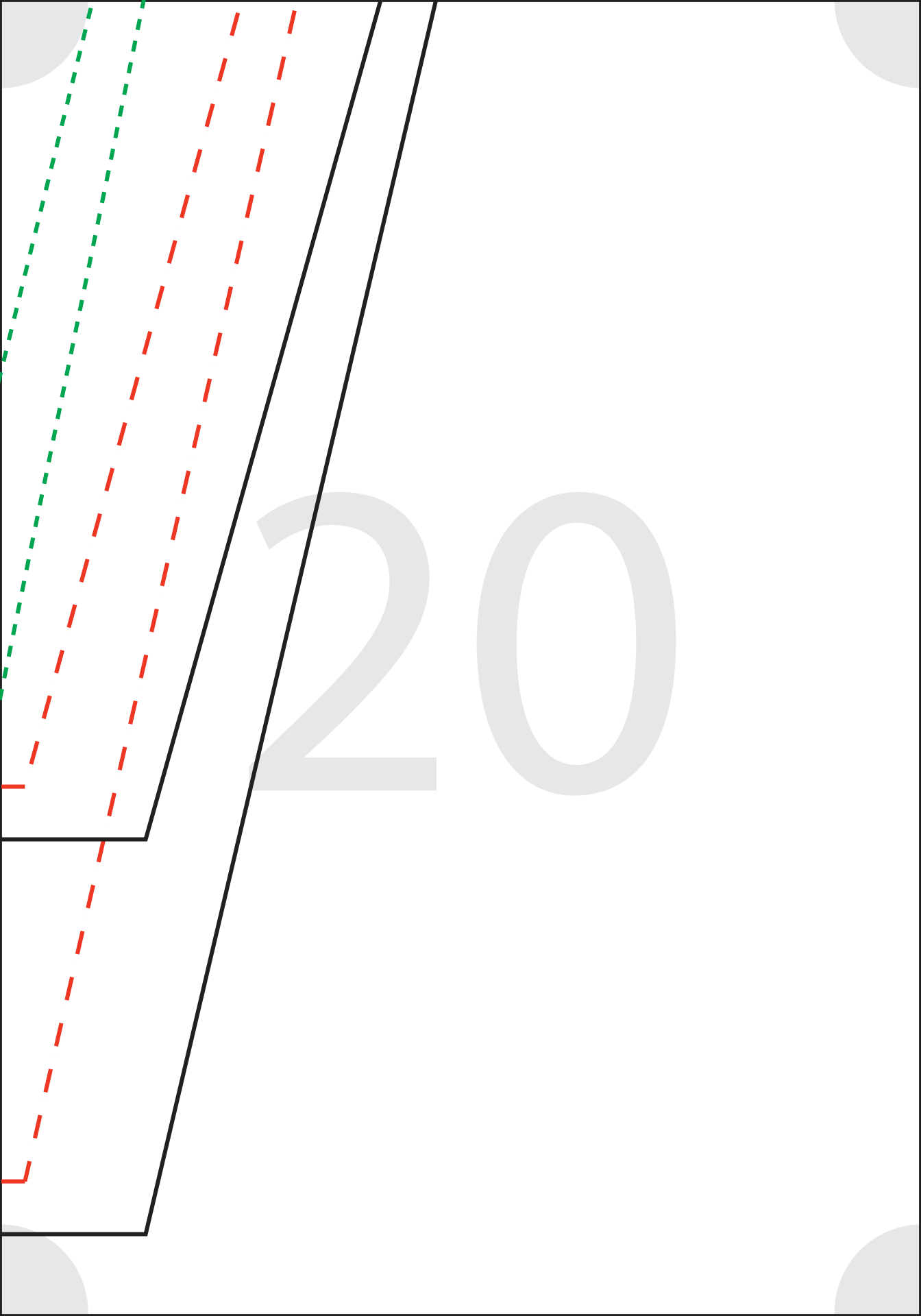


A diagram showing a hem for short length. It features a solid black horizontal line at the top. Below it is a green dashed line, followed by a red dashed line. The hem is shown as a folded edge on the right side, with the green dashed line curving upwards and then downwards to meet the red dashed line.

HIGH LENGTH



A diagram showing a hem for high length. It features a solid black horizontal line at the top. Below it is a green dashed line, followed by a red dashed line. The hem is shown as a folded edge on the right side, with the green dashed line curving upwards and then downwards to meet the red dashed line.



20